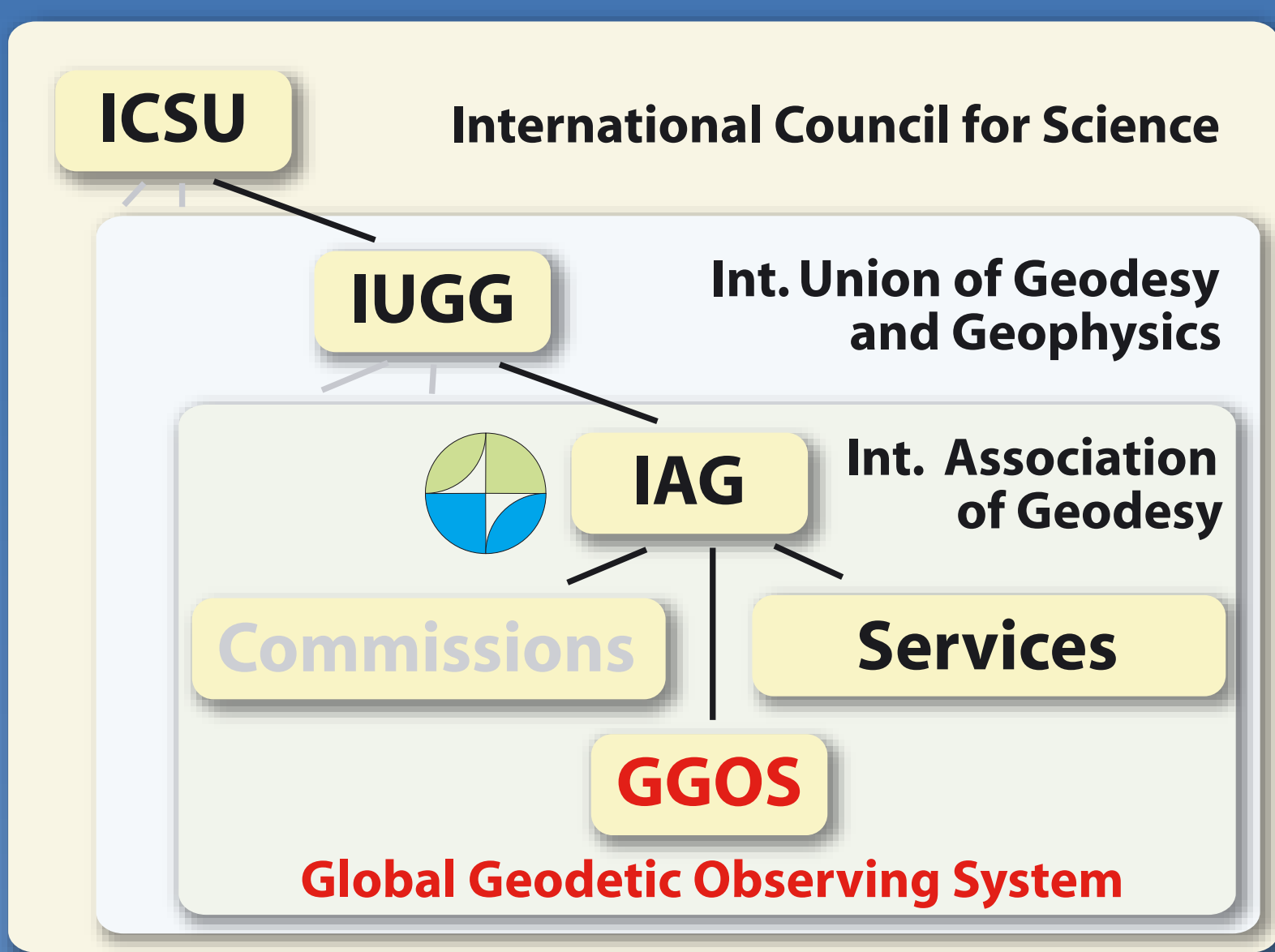


Markus Rothacher (GGOS Chair), Achim Helm (GeoForschungsZentrum Potsdam)
 Ruth E. Neilan (GGOS Vice-Chair) (Jet Propulsion Laboratory)
 Hans-Peter Plag (GGOS Vice-Chair) (University of Nevada)

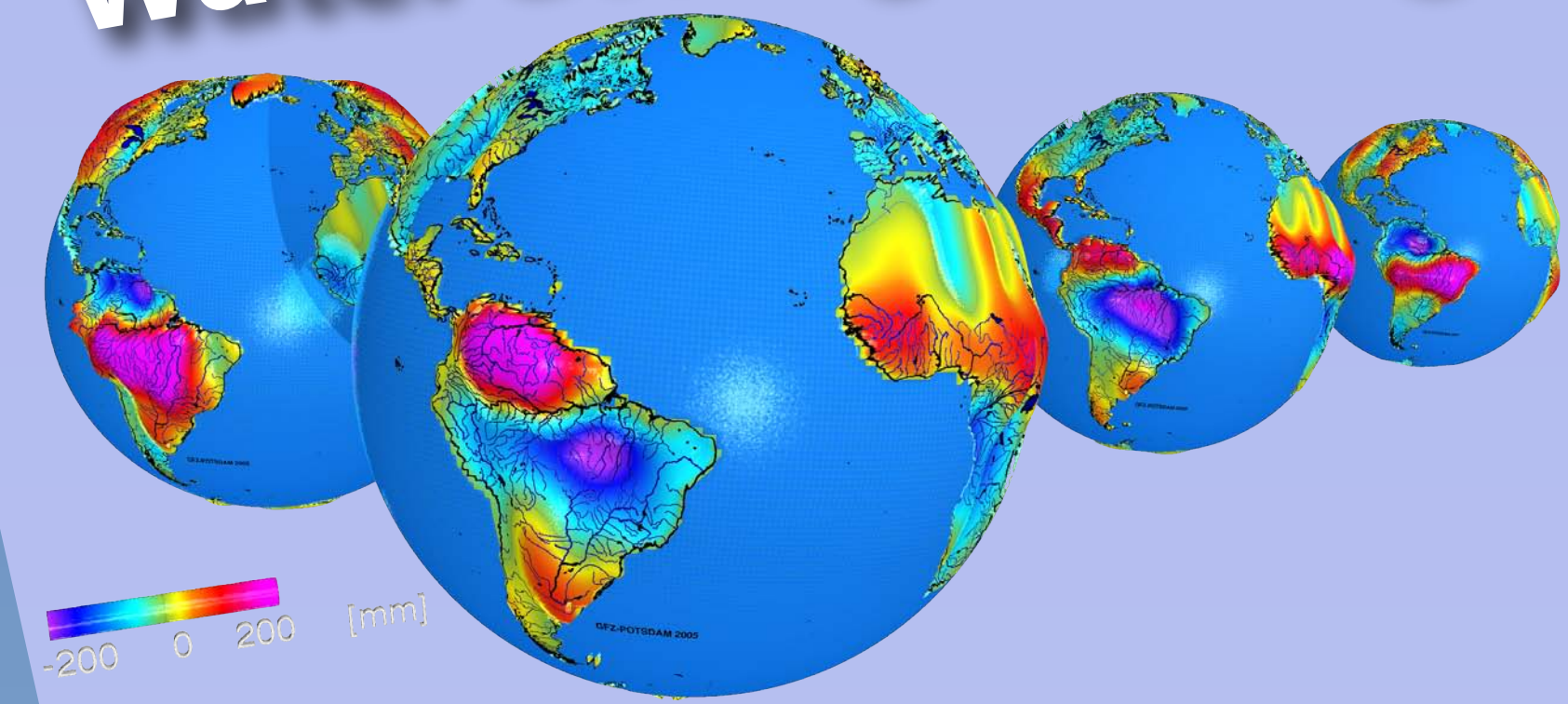


New Orleans 2005 Hurricane

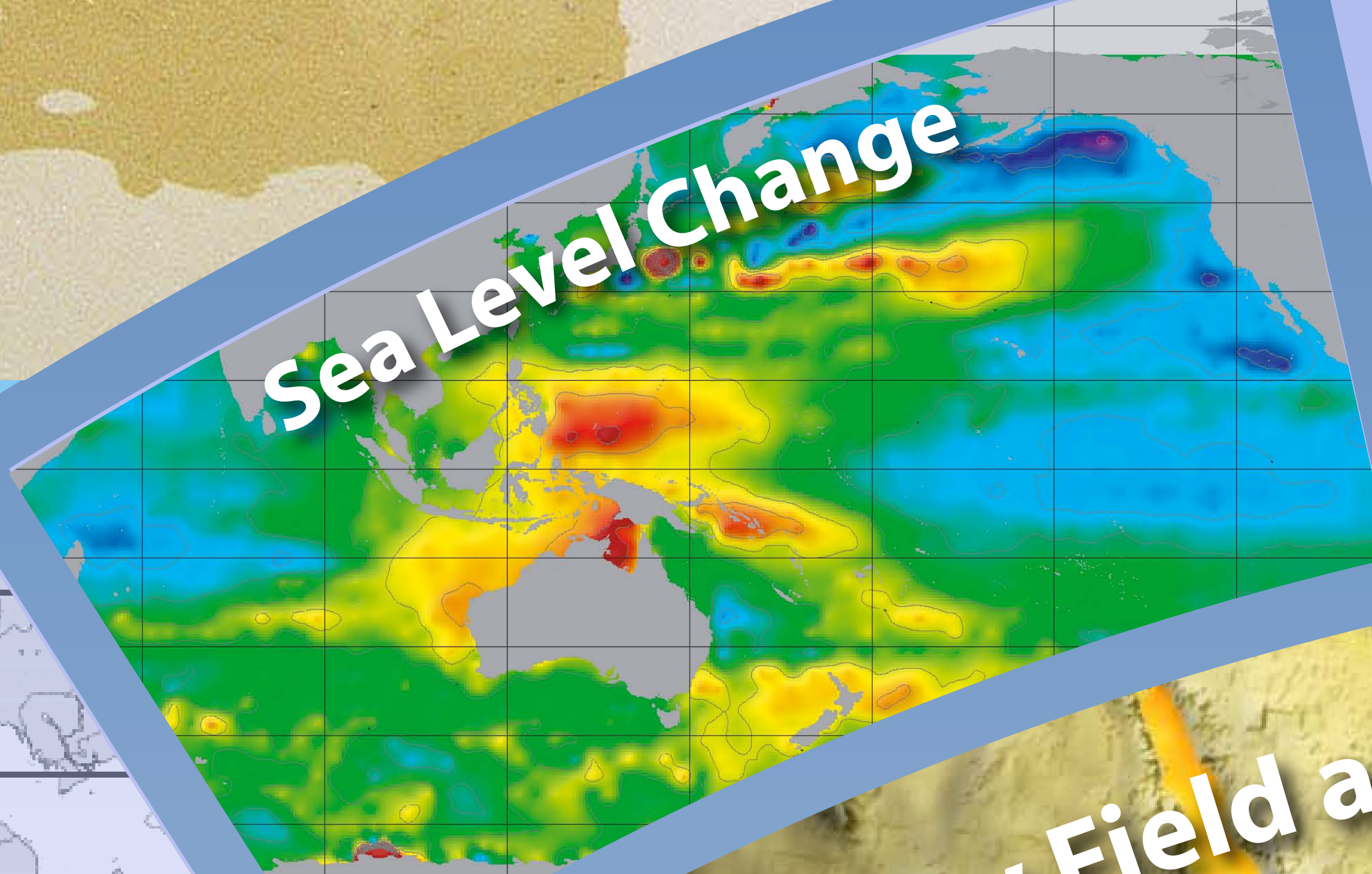


Elbe 2002 Flood

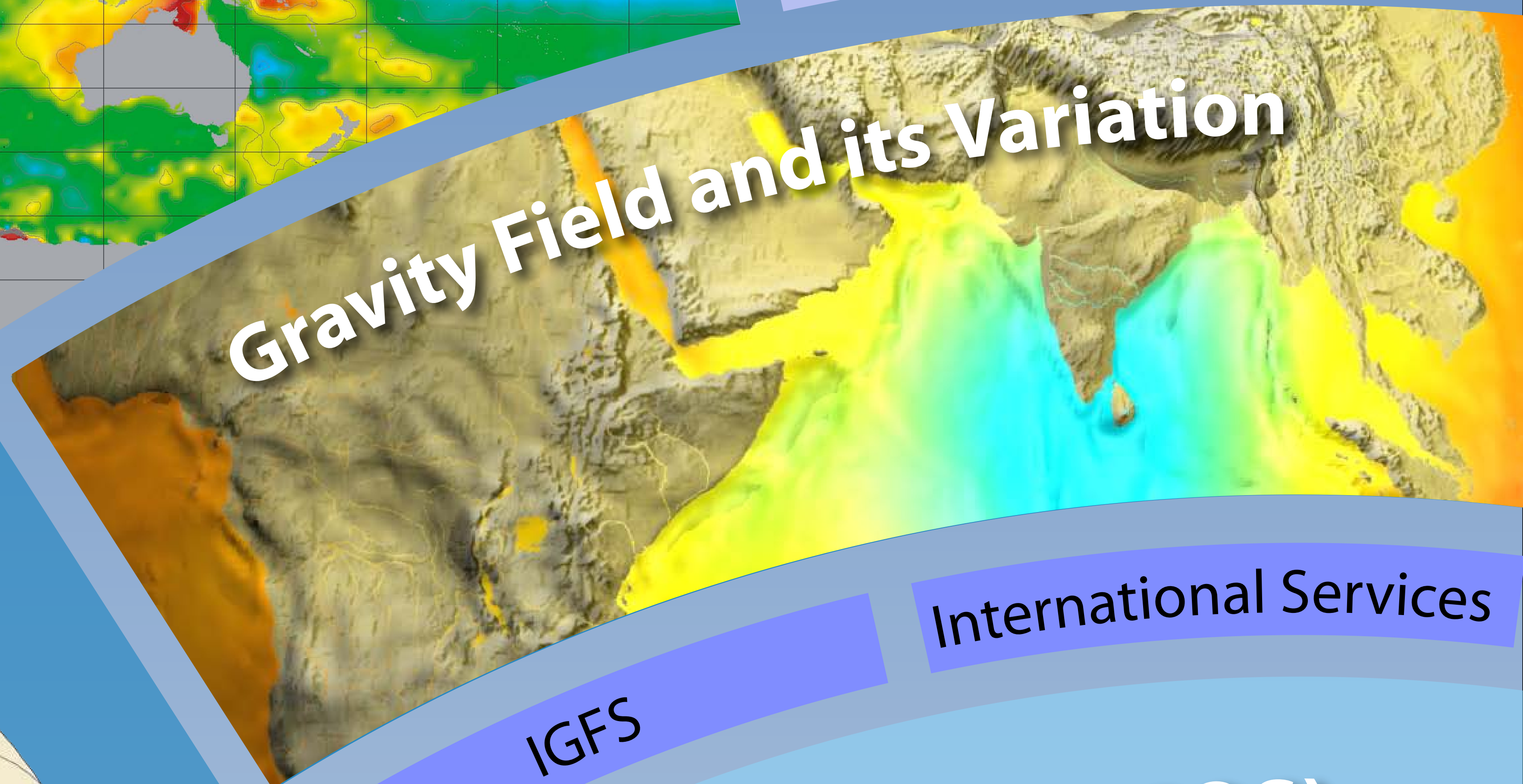
Water Storage Change



Sea Level Change



Gravity Field and its Variation



International Services

Global Geodetic Observation System (GGOS)

GPS, GLONASS, Galileo

Satellite Altimetry (JASON)

Geodetic Space Techniques

Satellite-to-satellite tracking (GRACE)

Atmospheric Sounding (CHAMP)

Satellite Laser Ranging

Tsunami Detection (GPS Buoy)

VLBI

IAG Services are based on more than 400 global observation stations

Kobe 1995 Earthquake

Sumatra 2004 Tsunami

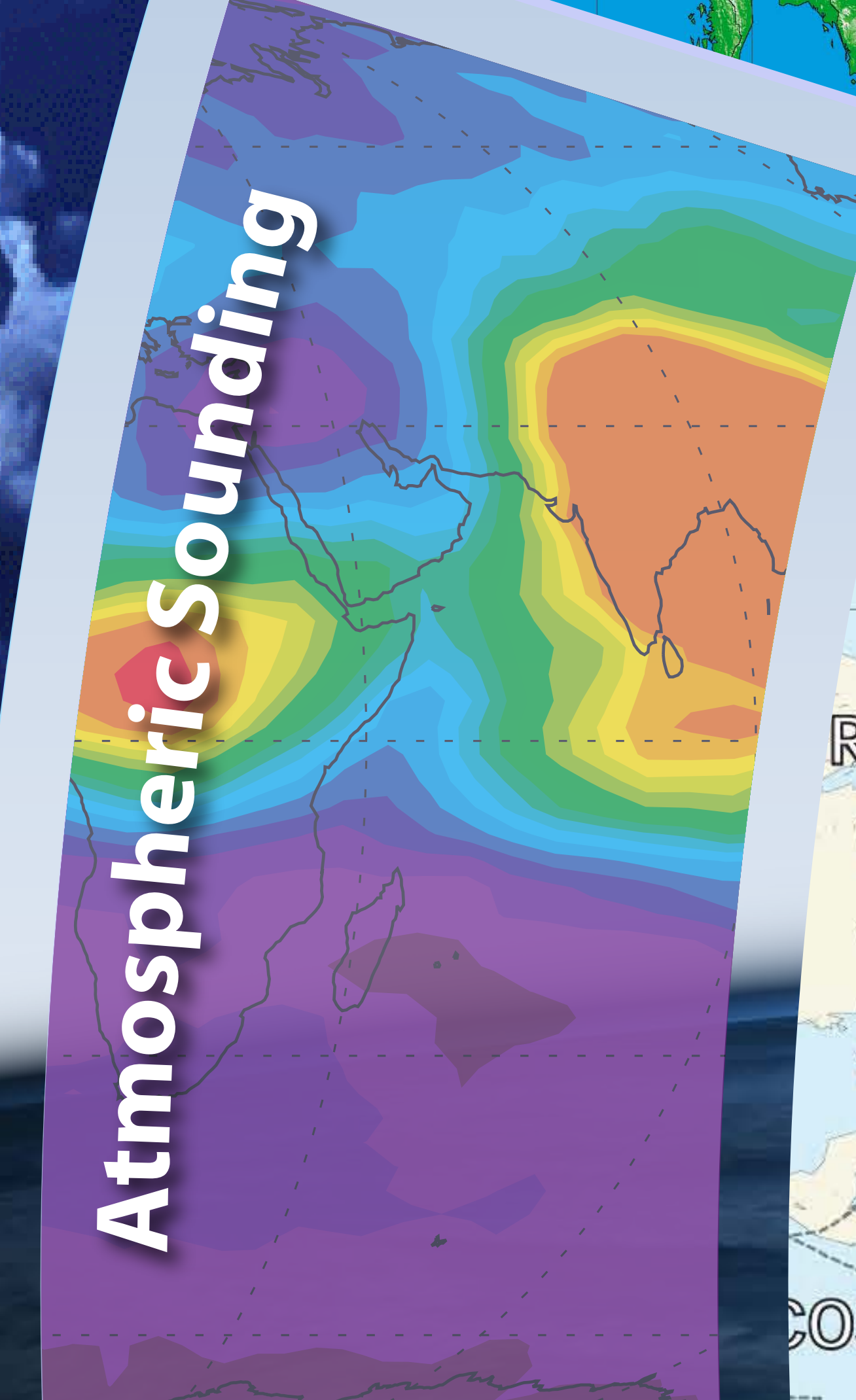
Disaster Monitoring



Deformations

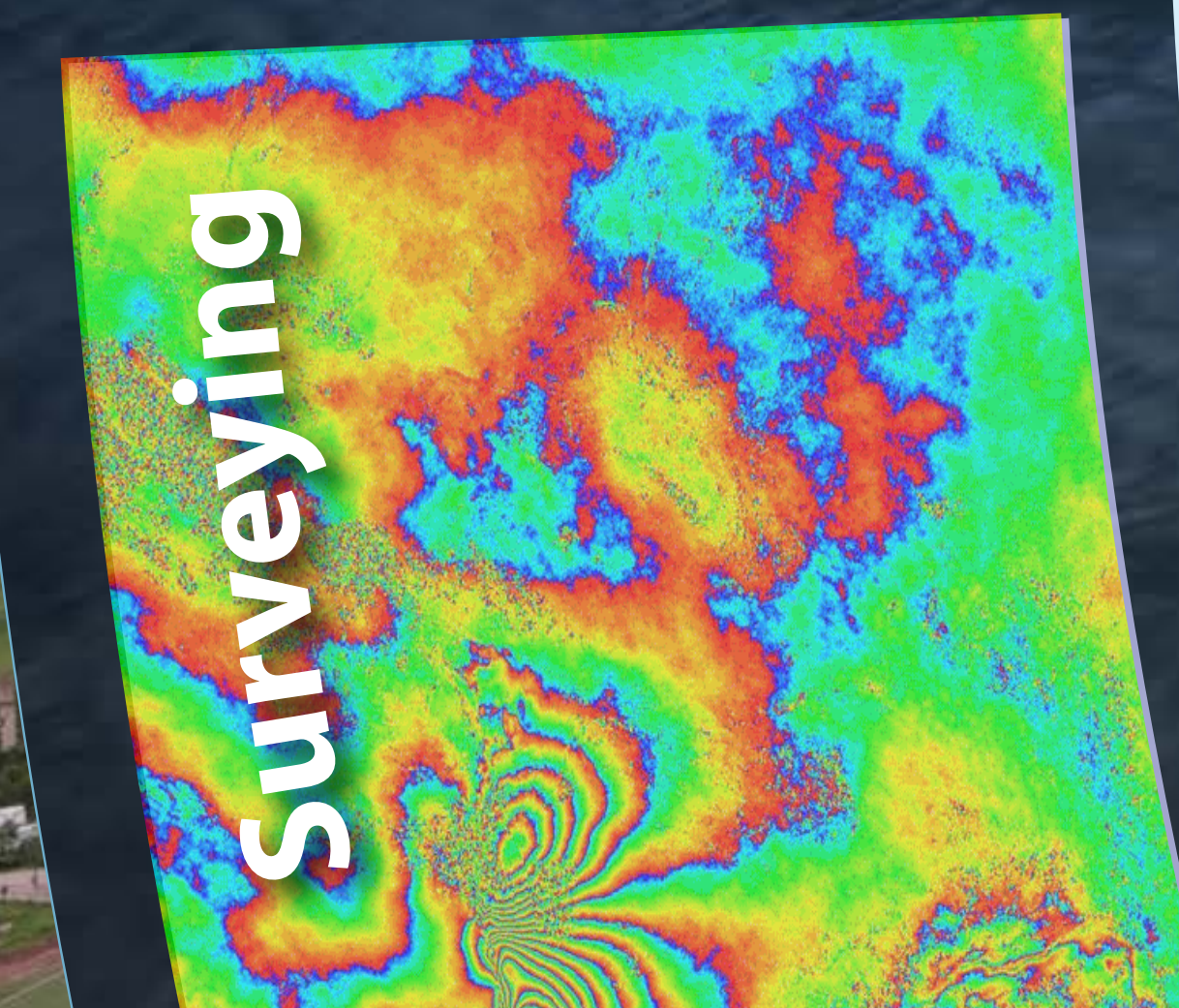


Atmospheric Sounding



St. Helens 1980 Eruption

Surveying



Kainaman 2004 Mudflow

Geometry and Kinematics

